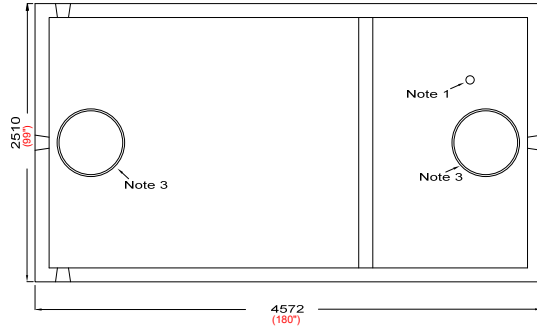


NEWMARKET PRE-CAST CONCRETE PRODUCTS LTD.

Telephone: 905-852-6111 ; Toll Free 1-800-263-1297

Model 32,000 (7000 GAL) Holding Tank - 3 Piece Unit Working Capacity 34,057 Litres (7491 Gal)



Top Section

- This tank design is installed in multiple units
- Each unit is tongue and groove design and is sealed with fibrous mastic sealant
- tanks are cast with 35 MPA strength concrete at 7 days with 5-7% air
- Steel reinforced with 10m rebar, spaced at 400mm in each direction at 25mm cover. CAN/CSA-G30.18.
- Tanks conform to National Standards of Canada CAN/CSA B66-18
- Non-sulphate resistant concrete
- Standard three 100mm Inlets and one 100mm outlet fitted with flexible rubber connections

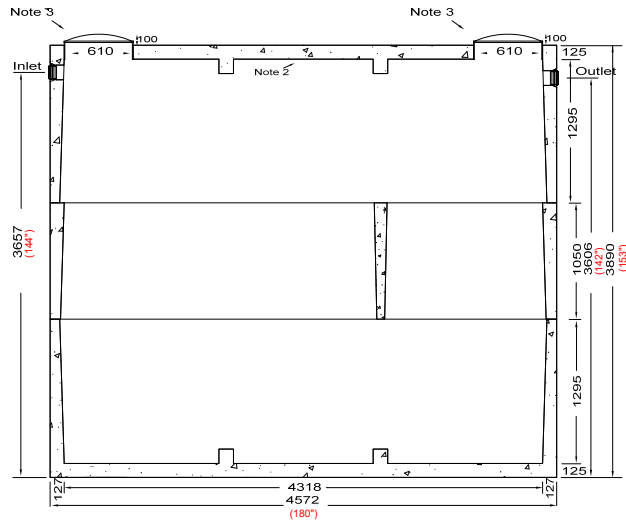
Top Third Weight.....	8420 Kg (18,563 Lbs)
Middle Third Weight.....	4516 Kg (9,956 Lbs)
Bottom Third Weight.....	8270 Kg (18,232 Lbs)
Total Tank Weight.....	21,206 Kg (46,751 Lbs)

Notes

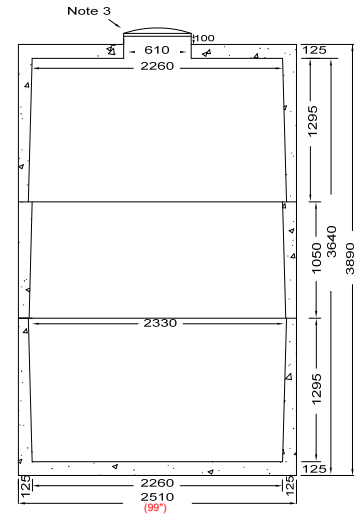
1. 75mm dia. PVC pipe cast-in to facilitate pump installation or venting
2. Water Storage Capacity to underside of top.....**36,121 Litres (7945 Gal)**
3. Cast in place 610mm ID plastic riser with plastic lid secured with stainless steel fasteners extending 50mm above top

Designed for up to one metre burial over top of tank - Deep burial and vehicle traffic tanks are available upon request. Specialty conformations may be possible

To ensure a water-tight seal, seams must be cemented both inside and out

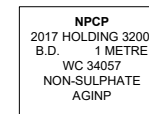


Side Elevation Section



End Elevation Section

Tank Markings Observed:
Inlet & Outlet is Marked.
Tank is marked on tank lid - Inlet End



Mastic Sealant

Tongue and Groove Top Joint



Mastic Sealant

Tongue and Groove Bottom Joint