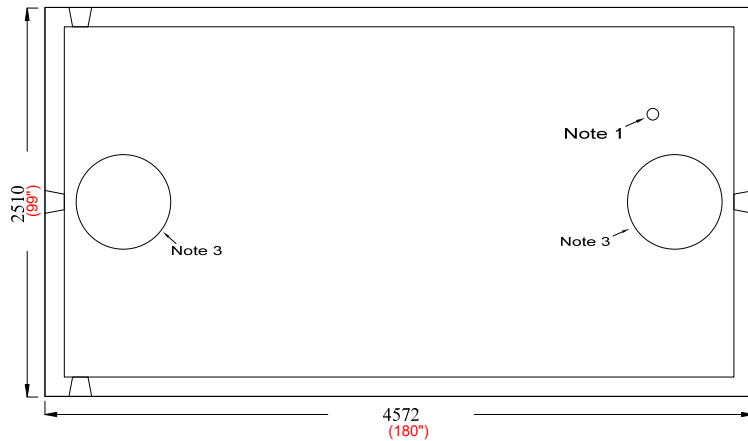


NEWMARKET PRE-CAST CONCRETE PRODUCTS LTD.

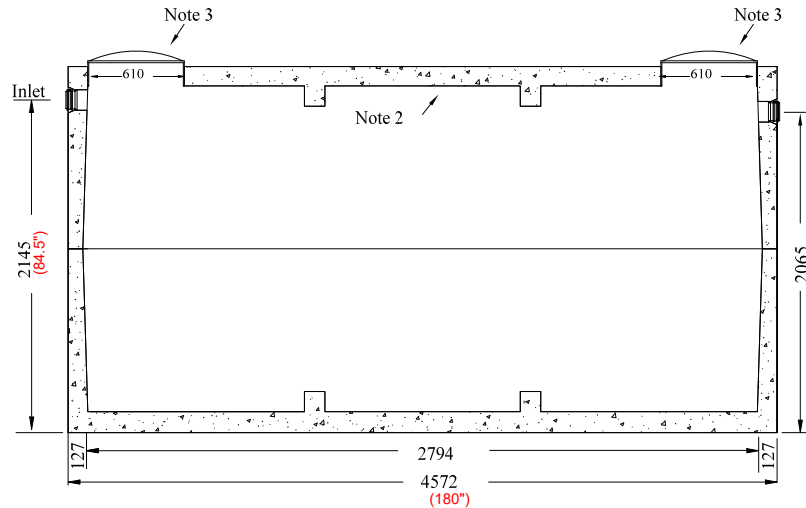
Telephone: 905-852-6111 ; Toll Free 1-800-263-1297

Model 18,000 (4000 GAL) Holding Tank - 2 Piece Unit

Working Capacity 18,634 Litres (4099 Gal)



Top Section



Side Elevation Section

- This tank design is installed in multiple units
- Each unit is tongue and groove design and is sealed with fibrous mastic sealant
- tanks are cast with 35 MPA strength concrete at 7 days with 5-7% air
- Steel reinforced with 10mm rebar, spaced at 400mm in each direction at 25mm cover. CAN/CSA-G30.18.
- Tanks conform to National Standards of Canada CAN/CSA B66-18
- Non-sulphate resistant concrete
- Standard (3) 100mm Inlets and 1 outlet fitted with flexible rubber connections

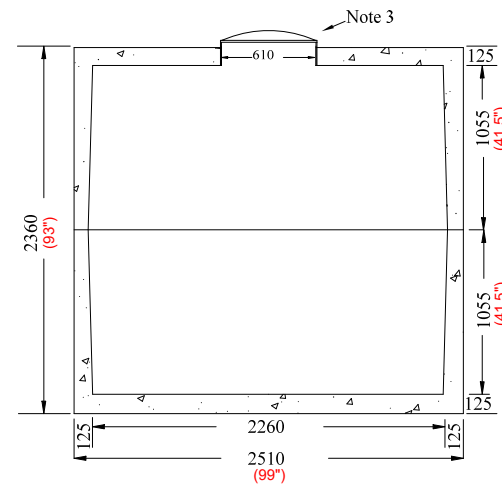
Top Half Weight..... 7705 Kg (16,986 Lbs)
 Bottom Half Weight..... 7470 Kg (16,469 Lbs)
 Total Tank Weight..... 15,175 Kg (33,455 Lbs)

Notes

1. 75mm dia. PVC pipe cast-in to facilitate pump installation or venting
2. Water Storage Capacity to underside of top..... **20,256 Ltrs. (4456 gal.)**
3. Cast in place 610mm ID plastic riser with plastic lid secured with stainless steel fasteners extending 50mm above concrete

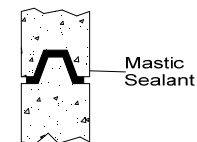
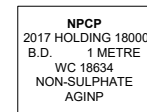
Designed for up to one metre burial over top of tank - Deep burial and vehicle traffic tanks are available upon request. Specialty conformations may be possible

To ensure water-tight seal, it is standard practice that the joint be cemented both inside and out



End Elevation Section

Tank Markings Observed:
 Inlet & Outlet is Marked.
 Tank is marked on tank lid - Inlet End



Tongue and Groove Joint