

# NEWMARKET PRE-CAST CONCRETE PRODUCTS LTD.

TELEPHONE: 905 852 6111 ; TOLL FREE 1 800 263 1297

## Model 11250 Holding Tank Low Profile Balancing Capacity ..... 11,106 Litres



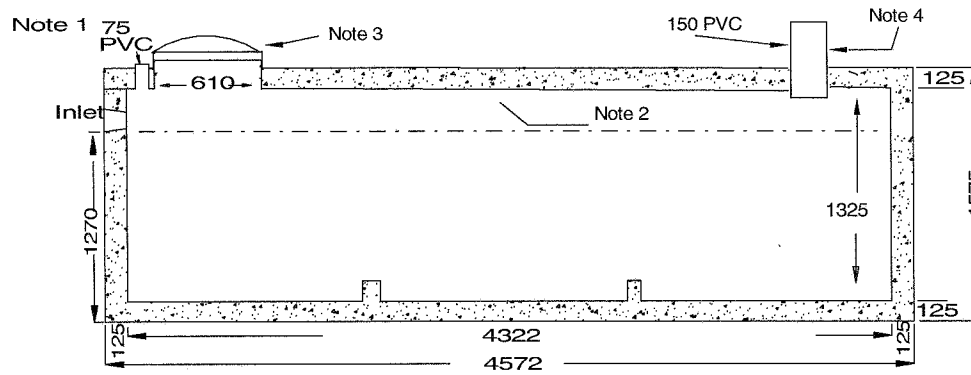
Top Section

- . Design shown is a one piece unit. The top is sealed with a fibrous mastic sealant.
- . Tanks are cast with 35 MPA strength concrete at 7 days with 5-7% air.
- . Steel reinforced with 10m rebar, spaced at 400mm each directions. CAN/CSA-G30.18
- . Rebar cover 25mm.
- . Tanks conform to National Standards of Canada CAN/CSA B66-05
- . Non sulphate resistant concrete.
- . Standard 3 inlets.

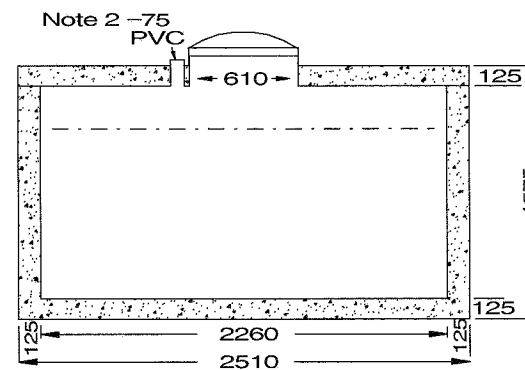
Bare weight .....8,270 Kg  
Lid weight..... 3,508 kg  
Total Tank Weight ..... 11,778 Kg.

- Notes: 1. 75mm diameter PVC pipe cast in top of lid for access to any electrical cords.  
2. Water storage capacity to under side of top .... **12,852 Ltr.**  
3. Cast in place 24"ID plastic riser with plastic lid secured with stainless steel fasteners extending 100mm above top of tank.  
4. 150mm x 460mm PVC pipe as pump out extension

Recommended for ONE METRE burial over top of tank, away from any vehicular traffic. Two metre burial tanks are available upon request.



Side Elevation Section



End Elevation Section

Tank markings observed:  
Inlet & outlet  
Marked on tank top

NPCP 2007
11250L
HOLDING
BD 1M
WC 11106
NON-SUL
AGINP
PML