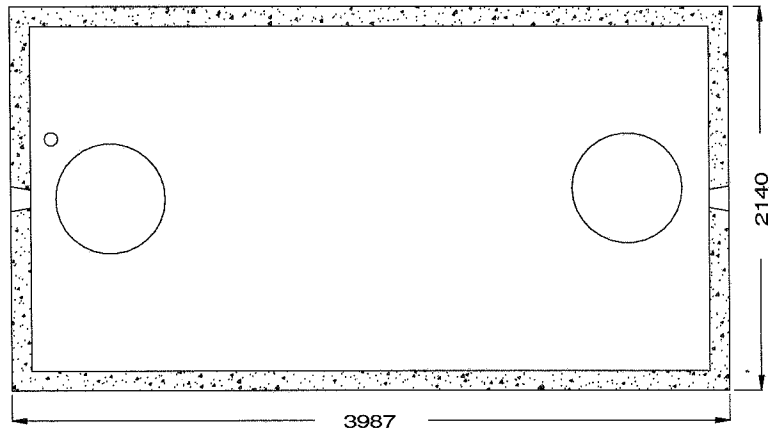


Model 9000 Holding Tank – 2 Piece Unit  
 Balancing Capacity ..... 9442 Litres



Top Section

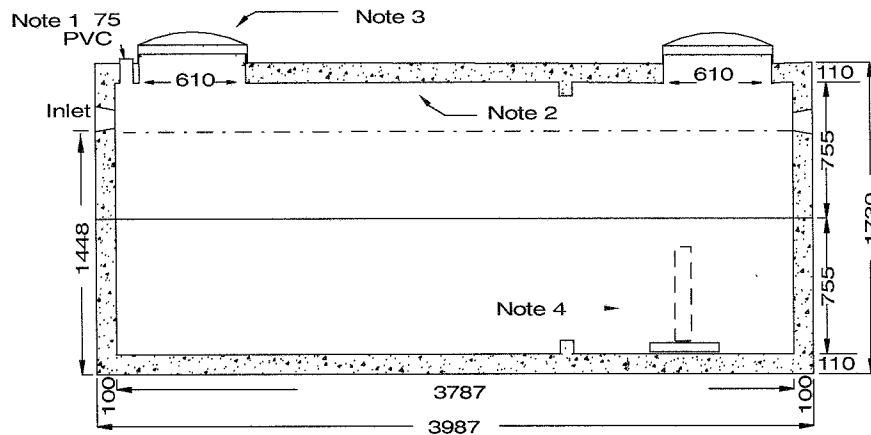
- Design shown is a two piece unit.
- Tongue and groove design is sealed with a fibrous mastic sealant.
- Tanks are cast with 35 MPA strength concrete at 7 days with 5 - 7% air.
- Steel reinforced with 10m Rebar, spaced at 400mm each direction. CAN/CSA-G30.18
- Top slab 200mm each direction
- 1.5 kg. structural fiber added to concrete. ASTM C 1116
- Rebar cover 25mm.
- Tanks conform to National Standards of Canada CAN/CSA B66-05.
- Non sulphate resistant concrete.
- Standard 3 inlets.

Top Half Weight ..... 5700 kg  
 Bottom Half Weight ... 5500 kg  
 Total Tank Weight .... 11200 kg

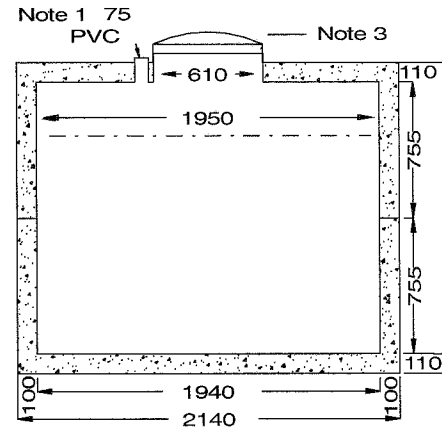
- Notes
- 1: 75 mm PVC pipe cast in top of lid for access to any electrical cord.
  - 2: Water storage capacity to under side of top ..... 11,545 Lt.
  - 3: Cast in place 24"ID plastic riser with plastic lid secured with stainless steel fasteners extending 100mm above top of tank.
  - 4: 750mm high float tree available upon request.

Recommended for ONE METRE burial over top of tank, away from any vehicular traffic. Two metre burial tanks are available upon request.

To ensure water-tight seal, it is recommended that the joint be grouted both inside and out.



Side Elevation Section



End Elevation Section

Tank markings observed;  
 Inlet & outlet.  
 Marked on tank top - inlet end

NPCP 2007  
 9000  
 HOLDING  
 BD 1M  
 WC 9442  
 NON-SUL  
 AGINP  
 PML



Mastic Sealant

Tongue and Groove Joint