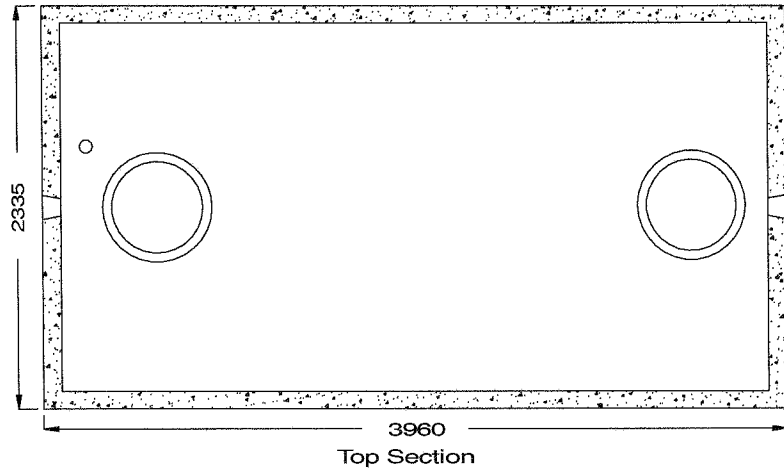


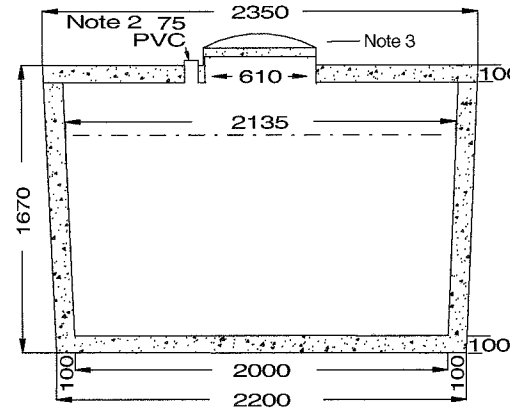
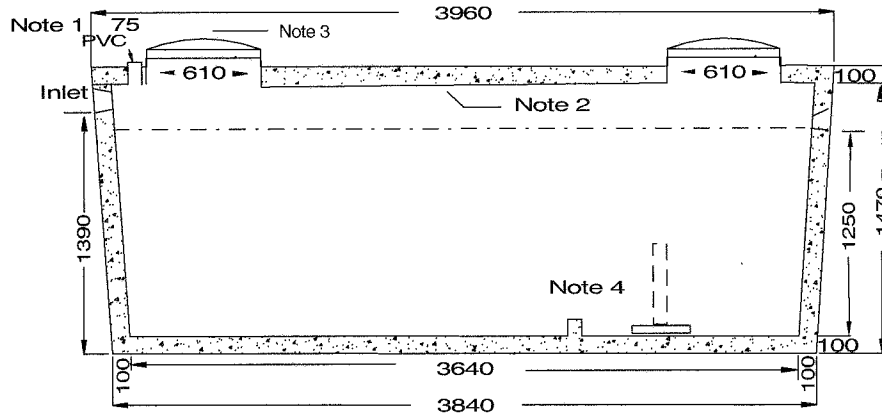
Model 9000 Holding Tank – 1 Piece Unit
Balancing Capacity 9272 Litres



- . Design shown is a one piece unit. The top is sealed with a fibrous mastic sealant.
- . Tanks are cast with 35 MPA strength concrete at 7 days with 5-7% air.
- . Steel reinforced with 10m rebar, spaced at 600mm long axis, 800mm short axis. CAN/CSA-G30.18
- . Top - 10m spaced at 200mm both directions.
- . 1.5 kg. structural fiber added to concrete. ASTM C 1116
- . Rebar cover 25mm.
- . Tanks conform to National Standards of Canada CAN/CSA B66-05
- . Non sulphate resistant concrete.
- . Standard 3 inlets
- Bare weight 6,005 Kg
- Lid Weight 2,295 kg
- Total Tank Weight 8,300 Kg.

- Notes: 1. 75mm PVC pipe cast in top of lid for access to any electrical cords.
 2. Water storage capacity to under side of top11,242 Ltr.
 3. Cast in place 24"ID plastic riser with plastic lid secured with stainless steel fasteners extending 100 mm above top of tank.
 4. 750mm high float available upon request.

Recommended for ONE METRE burial over top of tank, away from any vehicular traffic.
 Two metre burial tanks are available upon request.



Tank markings observed;
 Inlet & outlet.
 Marked on tank top - inlet end

NPCP 2007
 9000
 HOLDING
 BD 1M
 WC 9272
 NON-SUL
 AGINP
 PML