

**Model 45400 Holding Tank – 2 Piece Unit**  
 Balancing Capacity ... 45899 Litres

- This tank design is installed in multiple units.
- Each unit has a Tongue and groove design and is sealed with a fibrous mastic sealant.
- Tanks are cast with 35 MPA strength concrete at 7 days with 5 - 7% air.
- Steel reinforced with 20m Rebar, spaced at 300mm each direction at 50 mm cover. CAN/CSA-G30.18
- Tanks conform to National Standards of Canada CAN/CSA B66-05.
- Non sulphate resistant concrete.
- Standard 3 inlets.

**Notes**

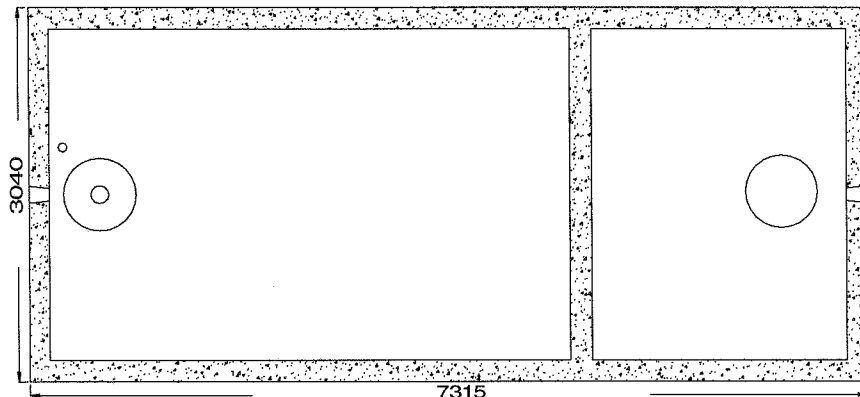
- 1: 75mm Pipe cast in top of lid for access of any electrical cords.
- 2: 610 x 610 partition knockout
- 3: Water storage capacity to under side of top ..... **51,123 Ltrs.**
- 4: 24"ld plastic risers poured in with plastic lids secured with stainless steel fasteners extending 100mm above top of tank.
- 5: 750mm high float tree available upon request.

To ensure a water-tight seal, it is recommended that the joint be grouted both inside and out.  
 Recommended for ONE METRE burial over top of tank, away from any vehicular traffic. Two metre burial tanks are available upon request.

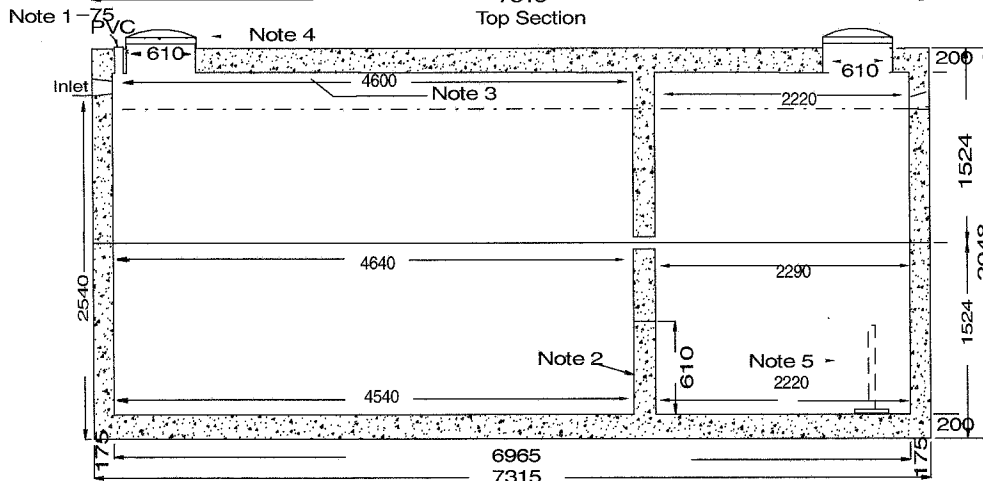
Top Half Weight ..... 19960 kg  
 Bottom Half Weight ... 19960 kg  
 Total Tank Weight ..... 39920 kg

Tank markings observed:  
 Inlet & outlet  
 Marked on tank top - inlet end

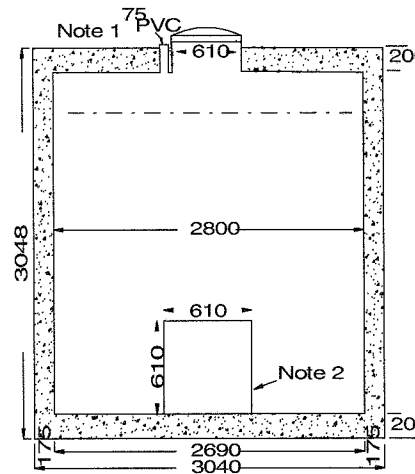
NPCP 2007  
 45400  
 HOLDING  
 BD 1M  
 WC 45899  
 NON-SUL  
 AGINP  
 PML



Top Section



Side Elevation Section



End Elevation Section

