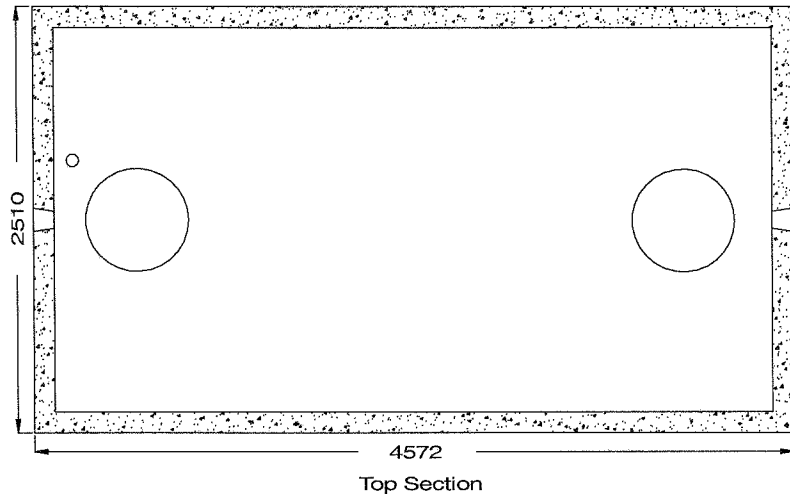


Model 18000 Holding Tank – 2 Piece Unit

Balancing Capacity 18199 Litres



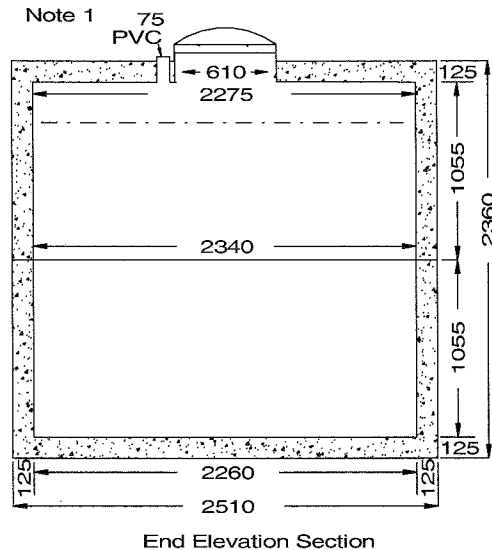
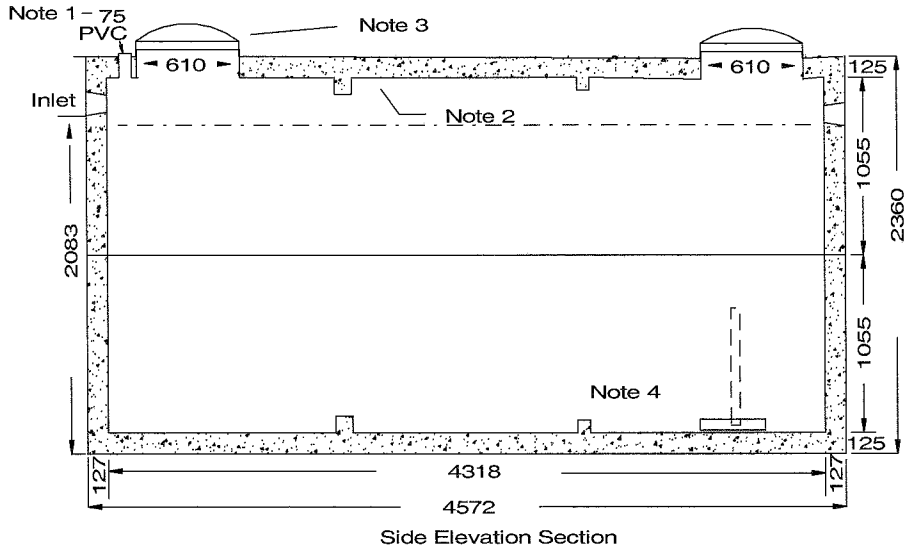
- This tank design is installed in multiple units.
- Each unit has a Tongue and groove design and is sealed with a fibrous mastic sealant.
- Tanks are cast with 35 MPA strength concrete at 7 days with 5 - 7% air.
- Steel reinforced with 10m Rebar, spaced at 400mm each direction. CAN/CSA-G30.18
- Rebar cover 25mm.
- Tanks conform to National Standards of Canada CAN/CSA B66-05
- Non sulphate resistant concrete.
- Standard 3 inlets.

Top Half Weight 7705 kg
 Bottom Half Weight .. 7470 kg
 Total Tank Weight 15175 kg

- Notes 1: 75mm PVC pipe cast in top of lid for access to any electrical cords.
 2. Water storage capacity to under side of top..... **21,274 Ltr.**
 3. Cast in place 24"ID plastic riser with plastic lid secured with stainless steel fasteners extending 100mm above top of tank.
 4. 750mm high float tree available upon request.

Recommended for ONE METRE burial over top of tank, away from any vehicular traffic. Two metre burial tanks are available upon request.

To ensure water-tight seal, it is recommended that the joint be grouted both inside and out.



Tank markings observed:
 Inlet & outlet
 Marked on tank top - inlet end

NPCP 2007
 18000
 HOLDING
 BD 1M
 WC 18199
 NON-SUL
 AGINP
 PML



Mastic Sealant

Tongue and Groove Joint