

NEWMARKET PRE-CAST CONCRETE PRODUCTS LTD.
 TELEPHONE: 905 852 6111 : TOLL FREE 1 800 263 1297

Model 13500 Holding Tank – 2 Piece Unit
 Balancing Capacity 13,743 Ltr.

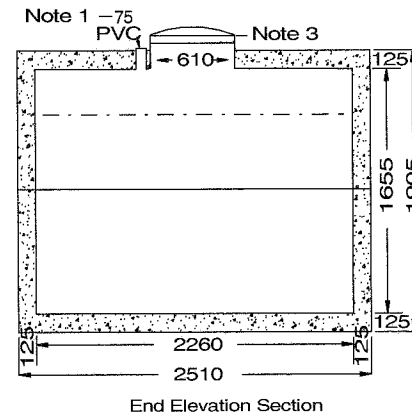
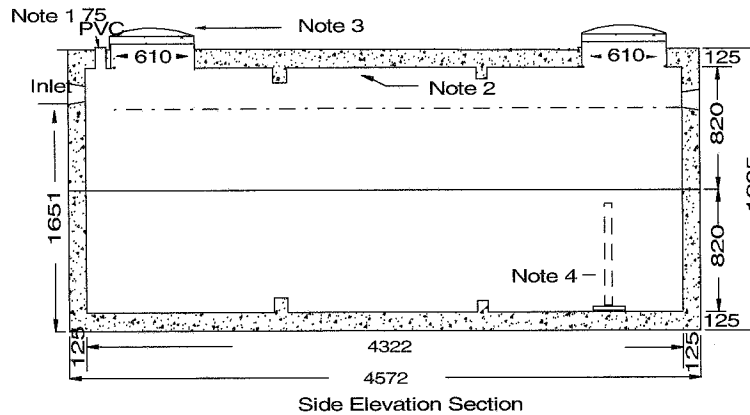
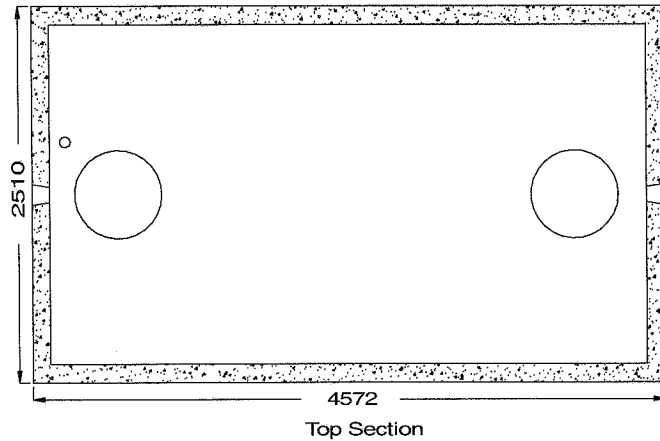
- . This tank design is installed in multiple units.
- . Tongue and groove design is sealed with a fibrous mastic sealant.
- . Tanks are cast with 35 MPA strength concrete at 7 days with 5-7% air.
- . Steel reinforced with 10m rebar, spaced at 400mm each direction. CAN/CSA-G30.18
- . Rebar cover 25mm.
- . Tanks conform to National Standards of Canada CAN/CSA B66-05.
- . Non sulphate resistant concrete.
- . Standard 3 inlets.

Top Half weight6,935 Kg
 Bottom half weight..... 6,500 kg
 Total Tank Weight 13,435 Kg.

- Notes: 1. 75mm diameter PVC pipe cast in to facilitate pump installation or venting.
 2. Water storage capacity to under side of top 16,312 Ltr.
 3. Cast in place 24"ID plastic riser with plastic lid secured with stainless steel fasteners extending 100mm above top of tank.
 4. 750mm high float tree available upon request.

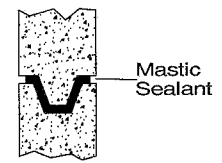
Recommended for ONE METRE burial over top of tank, away from any vehicular traffic. Two metre burial tanks are available upon request.

To ensure water-tight seal, it is recommended that the joint be grouted both inside and out.



Tank markings observed;
 Inlet & outlet.
 Marked on tank top - inlet end

NPCP 2007
 13500
 HOLDING
 BD 1M
 WC 13743
 NON-SUL
 AGINP
 PML



Tongue and Groove Joint